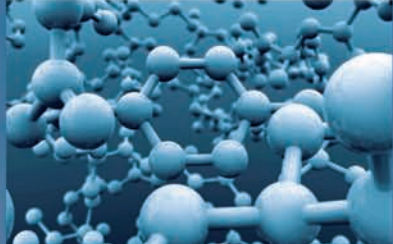


ENDURO™

FULL LINE CATALOG



- Nucleic Acid Separation
- Protein Separation
- Blotting Systems
- Power Supplies
- Imaging

simply reliable

TABLE OF CONTENTS

NUCLEIC ACID SEPARATION

ENDURO™ GEL XL	1
ENDURO™ 7.7 AND 7.10 HORIZONTAL GEL BOXES	2
ENDURO™ 10.10 AND 96 HORIZONTAL GEL BOX	3
ENDURO™ 10.10 AND 96 ACCESSORIES	4
ENDURO™ 15.10 AND 15.15 HORIZONTAL GEL BOXES	5
ENDURO™ 20.20 HORIZONTAL GEL BOXES	6

PROTEIN SEPARATION

ENDURO™ VE10 VERTICAL GEL SYSTEM	7
ENDURO™ VE20 VERTICAL GEL SYSTEM	8
ENDURO™ VE20 VERTICAL GEL SYSTEM	9

BLOTTING

ENDURO™ VE10 BLOTTER SYSTEM	10
ENDURO™ VE20 BLOTTER SYSTEM	10
ENDURO™ SEMI-DRY BLOTTER	11

POWER SUPPLIES

ENDURO™ POWER SUPPLIES SELECTION GUIDE	12
ENDURO™ POWER SUPPLY 250V & 300V	13
ENDURO™ POWER SUPPLY 500V	13
ENDURO™ POWER SUPPLY MINI	14
ENDURO™ POWER SUPPLY ADAPTERS	14

IMAGING

ENDURO™ UV TRANSILLUMINATORS	15
ENDURO™ MW MARKERS	15
ENDURO™ GDS GEL DOCUMENTATION SYSTEM	16
ENDURO™ GDS TOUCH GEL DOCUMENTATION SYSTEM	17
ENDURO™ GEL DOCUMENTATION SYSTEM ACCESSORIES	18
ENDURO™ TOTALLAB	19

OTHER

MOLECULAR BIOLOGY WORKFLOW	21
----------------------------	----

ENDURO™ GEL XL

The compact design of ENDURO Gel XL results in a much smaller footprint than that of traditional gel boxes and power supplies. The 150V power supply connects directly into the gel box, eliminating tangled leads. Casting gels is quick and easy - place the gel tray in the stand, slide the comb into the slots and pour. Combs are multichannel compatible and gel trays are UV transparent.

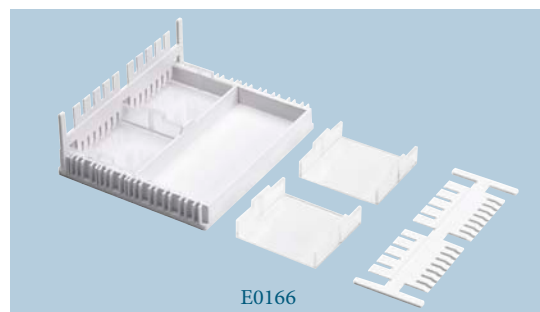
The molded gel tank provides leak-proof performance while the vented lid aids in dispersing heat. For safety, a magnetic sensor recognizes the presence or absence of the lid and allows current to flow accordingly. Operating parameters are set digitally, including amperage and voltage with automatic crossover. A run can be paused at any time and the parameters changed. A micro casting set for four 6 x 6 cm gels is available separately.



- Gel tank with integrated, direct connect power supply
- Quick and easy gel casting
- Simple operation
- High throughput - up to 112 samples in the large gel

SPECIFICATIONS

Output voltage/current	10V to 150V/10 - 400 mA
Timer	0 - 99 hr or continuous, audible alert
Overall Dimensions (W x D x H)	10 x 6.7 x 2.5 in./24.5 x 17 x 6.2 cm
Gel Capacity	1 large (12.5 x 12 cm), 2 small (12.5 x 6 cm), 4 micro (6 x 6 cm)
Program memory	Last programmed parameters saved
Electrical	Universal 100V- 240V, 50/60 Hz



ORDERING INFORMATION

Catalog No.	Description
E0160*	ENDURO Gel XL, with standard casting set (E0168), gel tank with safety lid and power supply
E0161	Large Gel Tray Set (12.5 x 12 cm), pack of 2
E0162	Small Gel Tray Set (12.5 x 6 cm), pack of 2
E0163	Micro Gel Tray Set (6 x 6 cm), pack of 4
E0164	Large Comb Set, 14/28 teeth, reversible, pack of 2
E0165	Micro Comb Set, 5/8 teeth, reversible, pack of 2
E0166	Micro Casting Set, includes 4 micro gel trays, 2 micro combs and a casting stand
E0167	Casting Stand, for all gel sizes
E0168	Standard Casting Set, includes 1 large and 2 small gel trays, 4 large combs and a casting stand

*To order 230V units add -230V to the end of the catalog number. 230V units include -EU and -UK cords.

ENDURO™ 7.7 AND 7.10 HORIZONTAL GEL BOXES



The ENDURO 7.7 and 7.10 are the smallest units in the ENDURO Horizontal Gel family. They are designed for low to medium numbers of samples. The small gel size maintains versatility while providing speed, economy and ease of use.

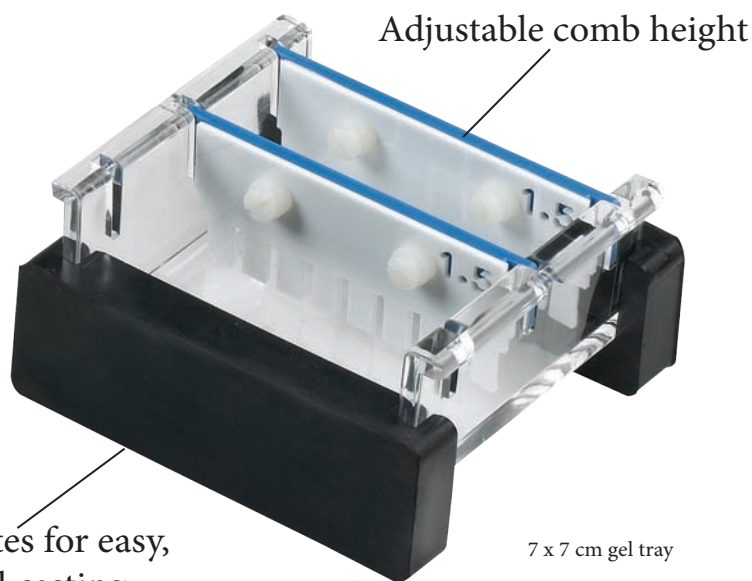
Two tray options are available – 7 x 7 cm and 7 x 10 cm – and combs ranging from preparative up to 16 samples. By simply altering the gel tray or comb, this compact unit is capable of resolving up to 64 different samples, preparing 1mL of sample or separating sample bands over a distance of 9 cm.

ENDURO 7.7 SPECIFICATIONS

Gel (W x L)	7 x 7 cm
Unit (W x L x H)	9 x 21 x 9 cm
Buffer Volume	225 mL
Max. Capacity	32 samples

ENDURO 7.10 SPECIFICATIONS

Gel (W x L)	7 x 10 cm
Unit (W x L x H)	9 x 21 x 9 cm
Buffer Volume	225 mL
Max. Capacity	64 samples



Rubber gates for easy, tapeless gel casting

ORDERING INFORMATION

Catalog No.	Description
E1007-7	ENDURO 7.7 Horizontal Gel with two 8 tooth combs (E1107-8-1.5), gel tray, casting gates, and loading guides
E1007-10	ENDURO 7.10 Horizontal Gel with three 8 tooth combs (E1107-8-1.5), gel tray, casting gates, and loading guides
E1007-7-GT	ENDURO 7.7 UV transparent gel tray
E1007-10-GT	ENDURO 7.10 UV transparent gel tray

ACCESSORY COMBS



Catalog No.	Description	Comb Thickness	Sample Volume (5 mm gel)	Multichannel Compatible
E1107-1-1.5	Comb 1 sample	1.5 mm	304 µL	No
E1107-16-1.5	Comb 16 sample	1.5 mm	15 µL	No
E1107-12MC-1.5	Comb 12 sample	1.5 mm	20 µL	Yes
E1107-5-1.5	Comb, 5 sample	1.5 mm	68 µL	No
E1107-16-1	Comb 16 sample	1 mm	10 µL	No
E1107-8-1	Comb 8 sample	1 mm	25 µL	No
E1107-8-1.5	Comb 8 sample	1.5 mm	37 µL	No
E1107-12MC-1	Comb 12 sample	1 mm	14 µL	Yes
E1107-10-1.5	Comb 10 sample	1.5 mm	27 µL	No

ENDURO™ 10.10 AND 96 HORIZONTAL GEL BOX

With gel tray options of 10 x 10 cm and 10 x 12 cm the 10.10 has been designed for routine horizontal gel electrophoresis. Extending only the width of this unit allows more samples to be resolved per gel than the 10.10 Mini without a significant increase in buffer or gel volumes. A maximum of 100 samples per gel can be resolved, making this unit ideal for routinely checking medium numbers of samples over short to medium gel run lengths. Loading guides allow easy well identification and sample loading. The ENDURO 96 Gel System is ideal for high throughput electrophoresis of PCR products or samples containing a small number of DNA bands such as the analysis of up to 96 PCR products loaded from 96-well microplates or thermal cycler blocks. Its 10x12 cm (WxL) gel dimensions and 96-well comb block format correspond to the standard microplate configuration. Two different types of combs are available: one 8 wells with one DNA marker lane and one 8 wells with 2 DNA marker lanes. The offset layout of the wells allows a maximum run length of 1.8 cm per well, resulting in improved separation.



Enduro 96

ENDURO 96 can accommodate samples from a 96-well plate – samples can be loaded directly using 8 channel Multichannel pipettes. As with all ENDURO units, leak-proof casting is simplified using the supplied casting dams while their ultra-compact size minimizes buffer usage and bench space requirements. The 10.10 base unit is the same for the 10.10 and the ENDURO 96 providing one very versatile gel box.

ENDURO 10.10 SPECIFICATIONS

Gel (W x L)	10 x 10 cm
Unit (W x L x H)	12.5 x 22 x 9 cm
Buffer Volume	300 mL
Max. Capacity	100 samples

ENDURO 96 SPECIFICATIONS

Gel (W x L)	10 x 12 cm
Unit (W x L x H)	12.5 x 22 x 9 cm
Buffer Volume	300 mL
Max. Capacity	100 samples

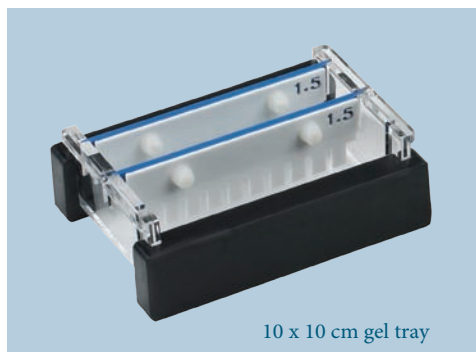


Enduro 10.10

ORDERING INFORMATION

Catalog No.	Description
E1010-10	ENDURO 10.10 Horizontal Gel with two 10 tooth combs, gel tray, casting gates, and loading guides
E1010-9611	ENDURO 96 Horizontal Gel with single marker 1 mm thick comb block, gel tray, casting gates
E1010-9611.5	ENDURO 96 Horizontal Gel with single marker 1.5 mm thick comb block, gel tray, casting gates
E1010-9621	ENDURO 96 Horizontal Gel with double marker 1 mm thick comb block, gel tray, casting gates
E1010-9621.5	ENDURO 96 Horizontal Gel with double marker 1.5 mm thick comb block, gel tray, casting gates
E1010-10-GT	ENDURO 10.10 UV transparent gel tray

ENDURO™ 10.10 AND 96 ACCESSORIES



ACCESSORIES Enduro 10.10 and Enduro 96

Catalog No.	Description	Marker	ENDURO 10.10	ENDURO 96	Comb Thickness	Sample Volume (5 mm gel)	Multichannel Compatible
E1110-20MC-1	Comb 20 sample		✓	✓	1 mm	14 µL	Yes
E1110-10MC-1	Comb 10 sample		✓	✓	1 mm	27 µL	Yes
E1110-20MC-1.5	Comb 20 sample		✓	✓	1.5 mm	20 µL	Yes
E1110-12-1.5	Comb 12 sample		✓	✓	1 mm	23 µL	No
E1110-15-1.5	Comb 16 sample		✓	✓	1.5 mm	24 µL	No
E1110-8-1	Comb 8 sample		✓	✓	1 mm	41 µL	No
E1110-16-0.75	Comb 16 sample		✓	✓	0.75 mm	12 µL	No
E1110-16-2	Comb 16 sample		✓	✓	2 mm	32 µL	No
E1110-12-1.5	Comb 12 sample		✓	✓	1.5 mm	34 µL	No
E1110-10MC-1.5	Comb 10 sample		✓	✓	1.5 mm	41 µL	Yes
E1110-12-0.75	Comb 12 sample		✓	✓	0.75 mm	17 µL	No
E1110-25-2	Comb 25 sample		✓	✓	2 mm	20 µL	No
E1010-9611-CB	Conversion kit to ENDURO 96	Single	✓		1 mm		Yes
E1010-9611.5-CB	Conversion kit to ENDURO 96	Single	✓		1.5 mm		Yes
E1010-9621.CB	Conversion kit to ENDURO 96	Double	✓		1 mm		Yes
E1010-9621.5-CB	Conversion kit to ENDURO 96	Double	✓		1.5 mm		Yes
E1010-9611-C	ENDURO 96 Comb Block	Single		✓	1 mm		Yes
E1010-9611.5-C	ENDURO 96 Comb Block	Single		✓	1.5 mm		Yes
E1010-9621-C	ENDURO 96 Comb Block	Double		✓	1 mm		Yes
E1010-9621.5-C	ENDURO 96 Comb Block	Double		✓	1.5 mm		Yes

ENDURO™ 15.10 AND 15.15 HORIZONTAL GEL BOXES

The ENDURO 15.10 and 15.15 offer a wide degree of versatility. Two trays are available – 15 x 10 cm and 15 x 15 cm – allowing the choice of two gel lengths at the time of purchase. Maximizing comb and tray options allow up to 210 samples to be resolved per gel. The 15 cm total run length allows restriction fragments or other close MW sample bands to be easily separated and identified. Speed loading is accomplished using 10, 14, 16, 18, 28 or 30 sample multi-channel pipette compatible combs. These units provide high resolution separation of nucleic acid fragments 100bp to 20 kbp and are excellent for screening of PCR samples or routine DNA fragment analysis.



15 x 15 cm gel tray

ORDERING INFORMATION

Catalog No.	Description
E1015-10	ENDURO 15.10 Horizontal Gel with one 16 and one 20 tooth combs, gel tray, casting gates, and loading guides
E1015-15	ENDURO 15.15 Horizontal Gel with one 16, 20 & 28 tooth combs, gel tray, casting gates, and loading guides
E1015-10-GT	ENDURO 10.10 UV transparent gel tray
E1015-15-GT	ENDURO 15.15 UV transparent gel tray

ENDURO 15.10 SPECIFICATIONS

Gel (W x L)	15 x 10 cm
Unit (W x L x H)	17.5 x 26.5 x 9 cm
Buffer Volume	500 mL
Max. Capacity	140 samples

ENDURO 15.15 SPECIFICATIONS

Gel (W x L)	15 x 15 cm
Unit (W x L x H)	17.5 x 26.5 x 9 cm
Buffer Volume	500 mL
Max. Capacity	210 samples

ACCESSORY COMBS

Catalog No.	Description	Comb Thickness	Sample Volume (5 mm gel)	Multichannel Compatible
E1115-16MC-1.5	Comb 16 sample	1.5 mm	40 µL	No
E1115-20-1.5	Comb 20 sample	1.5 mm	32 µL	No
E1115-30MC-1.5	Comb 30 sample	1.5 mm	19 µL	Yes
E1115-28MC-1	Comb 28 sample	1 mm	11 µL	Yes
E1115-30MC-1	Comb 30 sample	1 mm	13 µL	Yes
E1115-20-1	Comb 20 sample	1 mm	21 µL	No
E1115-8-1	Comb 8 sample	1 mm	100 µL	No
E1115-14MC-2	Comb 14 sample	2 mm	59 µL	Yes
E1115-18-1	Comb 18 sample	1 mm	11 µL	No
E1115-20-2	Comb 20 sample	2 mm	43 µL	No
E1115-35-1.5	Comb 35 sample	1.5 mm	15 µL	No
E1115-16MC-1	Comb 16 sample	1 mm	27 µL	Yes
E1115-18MC-1	Comb 18 sample	1 mm	17 µL	Yes
E1115-12-1.5	Comb 12 sample	1.5 mm	61 µL	No
E1115-20-0.75	Comb 20 sample	0.75 mm	16 µL	No
E1115-12-1	Comb 12 sample	1 mm	41 µL	No
E1115-12-1	Comb 12 sample	1 mm	44 µL	No
E1115-16MC-1	Comb 16 sample	1 mm	27 µL	Yes
E1115-10-1	Comb 10 sample	1 mm	45 µL	No
E1115-14MC-1	Comb 14 sample	1 mm	29 µL	Yes
E1115-14MC-1	Comb 14 sample	1 mm	8 µL	Yes
E1115-10-1.5	Comb 10 sample	1.5 mm	68 µL	No
E1115-16MC-2	Comb 16 sample	2 mm	54 µL	Yes



ENDURO™ 20.20 HORIZONTAL GEL BOXES

The high capacity ENDURO 20.20 is primarily designed for resolution of high numbers of samples such as from cloning or PCR. The ENDURO 20.20 allows ultra-high resolution separations over extended runs and is ideal for large-scale preparatory and analytical electrophoresis techniques. Multichannel pipette compatible combs up to 40 samples facilitate speed loading of up to 440 samples per gel. 50 sample combs allow maximum sample capacity of 550 samples per gel. Casting dams allow gels to be rapidly cast externally while the ENDURO 20.20 unit is in use.



Available in a variety of sizes from mini to maxi

Shape of lid encourages recycling of condensed buffer

Removal of safety lid disconnects power from the system

Lid fits in only one direction

Side tabs and pressure pads for easy, safe lid removal

Molded for leakproof performance and durability

Labnet name is your guarantee of quality

Protective electrode cassettes



Common to all horizontal gel boxes

ACCESSORY COMBS

Catalog No.	Description	Comb Thickness	Sample Volume (5 mm gel)	Multichannel Compatible
E1120-20MC-1	Comb 20 sample	1 mm	27 µL	Yes
E1120-20MC-0.75	Comb 20 sample	0.75 mm	20 µL	Yes
E1120-40MC-1	Comb 40 sample	1 mm	11 µL	Yes
E1120-40MC-1.5	Comb 40 sample	1.5 mm	17 µL	Yes
E1120-20MC-1.5	Comb 20 sample	1.5 mm	41 µL	Yes
E1120-25-1	Comb 25 sample	1 mm	21 µL	No
E1120-30-1	Comb 30 sample	1 mm	17 µL	No
E1120-40MC-2	Comb 40 sample	2 mm	23 µL	Yes
E1120-16-0.75	Comb 16 sample	0.75 mm	30 µL	No
E1120-50-2	Comb 50 sample	2 mm	21 µL	No

ENDURO 20.20 SPECIFICATIONS

Gel (W x L)	20 x 20 cm
Unit (W x L x H)	23 x 39.5 x 9 cm
Buffer Volume	1,200 mL
Max. Capacity	450 samples

- Run up to 450 samples
- Low buffer volumes
- Ideal for extended separations
- Multichannel pipette compatible combs for fast loading

ORDERING INFORMATION

Catalog No.	Description
E1020-20	ENDURO 20.20 Horizontal Gel with two 40 and two 20 tooth combs, gel tray, casting gates, and loading guides
E1020-20-GT	ENDURO 20.20 UV transparent gel tray

ENDURO™ VE10 VERTICAL GEL SYSTEM

Labnet's ENDURO™ Modular Mini Vertical Gel System for protein electrophoresis is ideal for screening new samples and evaluating sample preparation conditions. It is a great research tool that can run a maximum of 4 gels within an hour. These gels can be either custom cast or pre-cast. The same system allows for PAGE, electroblotting and 2D gel electrophoresis to be carried out in the same tank by changing the insert. Each VE10 electrophoresis system can accommodate up to 4 handcast gels and 2 commercial precast gels to provide complete flexibility for individual research needs. The unique sliding clamp technology within the PAGE insert facilitates fast, intuitive leak-free casting. Reversible combs also serve as loading indicators to aid pipette-well alignment, preventing sample loading errors. Insert your comb into a freshly poured gel which is allowed to set before inverting the comb to use a loading template that sits conveniently above the newly formed sample wells. With easy set up and reliable performance, the VE10 Mini Vertical systems are perfect for today's laboratories where the ability to generate reproducible results quickly is of prime importance.



SPECIFICATIONS

Gel (W x L)	10 x 10 cm
Gel Capacity	4 gels
Unit (W x D x H)	19 x 13 x 15 cm
Buffer Volume	250 mL
Max. Samples	20 per gel

ACCESSORY PLATES

Catalog No.	Description	Spacer (mm)
E2110-NG-2	Notched	
E2110-PG-2	Square	
E2110-DP	Dummy	
E2110-PG-0.75-BS	Square	0.75
E2110-PG-1-BS	Square	1
E2110-PG-1.5-BS	Square	1.5
E2110-PG-2-BS	Square	2
E2110-NG-0.75-BS	Notched	0.75
E2110-NG-1-BS	Notched	1
E2110-NG-1.5-BS	Notched	1.5
E2110-NG-2-BS	Notched	2
E2110-0.75-S	Gel spacer	0.75
E2110-1-S	Gel spacer	1
E2110-1.5-S	Gel spacer	1.5
E2110-2-S	Gel spacer	2

ACCESSORY COMBS

Catalog No.	Description	Well Width	Comb Thickness	Well Volume	Multichannel Compatible
E2110-12-1	Comb 12 sample	3.75	1	35 ul	No
E2110-12-1	Comb 12 sample	3.75	1.5	50 ul	No
E2110-10-1	Comb 10 sample	4	1	40 ul	No
E2110-10-1.5	Comb 10 sample	4	1.5	60 ul	No
E2110-10-0.75	Comb 10 sample	4	0.75	30 ul	No
E2110-5-1.5	Comb 5 sample	10	1.5	150 ul	No
E2110-5-0.75	Comb 5 sample	10	0.75	75 ul	No
E2110-16MC-1	Comb 16 sample	2.5	1	25 ul	Yes
E2110-20-1	Comb 20 sample	2	1	20 ul	No
E2110-5-1	Comb 5 sample	10	1	100 ul	No
E2110-20-0.75	Comb 20 sample	2	0.75	15 ul	No
E2110-12-2	Comb 12 sample	3.75	2	70 µL	No
E2110-8MC-1	Comb 8 sample	6	1	60 µL	Yes
E2110-20-1.5	Comb 20 sample	2	1.5	30 µL	No

ORDERING INFORMATION

Catalog No.	Description
E2010-PA	ENDURO PAGE system, includes PAGE insert, buffer tank with leads and cooling pack
E2010-PCA	ENDURO PAGE casting system
E2010-BM	Mini Vertical Electroblotting Module for use with mini vertical gel system, includes 4 cassettes and 8 fiber pads
R1000-1Kb	ENDURO Molecular Marker 1 Kb DNA ladder: 13 fragments, 300-10,000bp, 500 µL

ENDURO™ VE20 VERTICAL GEL SYSTEM



The ENDURO™ VE20 is Labnet's new large format vertical gel electrophoresis system. Designed to perform a variety of separations, including first and second-dimension SDS-PAGE, native, preparative, gradient, high-resolution nucleic acid electrophoresis and electroblotting, the VE20 is one of the most versatile large format vertical systems available.

The VE20 distinguishes itself in its flexibility of applications, ease of gel casting and set-up requiring only 4 screws to secure 4 (16 x 17.5 cm) gels. The VE20 vertical screw-clamp configuration distributes pressure evenly along the height of the gel rather than in the center to eliminate plate bowing and gel compression. The new configuration still maintains a leak-proof seal during casting; while the ergonomic wave-like design of the PAGE insert aids both handling and set up.

Whatever your large format gel requirements are, the VE20 can be made to meet them. Whether it is running 2 or 4 gels, electroblotting or IEF using IPG strips, all of these techniques may be performed using the same base unit while retaining the benefits provided by large format electrophoresis, such as extended separation distances, greater sample throughput and superior resolution.

SPECIFICATIONS

Faster Set Up

- Fewer Screws – novel vertical screw-clamp technology reduces the number of screws required for set up compared to traditional large-format systems, dramatically reducing assembly time
- No Top Tank Assembly- A built-in inner buffer chamber within the PAGE insert allows set up to be completed in one step

Plate Dimensions: (W x H x D)	20 x 20 x 0.4 cm
Standard Spacer Dimensions: (W x H)	2 x 20 cm
IPG Spacer Dimensions: (W x H)	0.6 x 20 cm
Unit Dimensions: (W x H x D)	30 x 27 x 18 cm
Unit Weight	2.5 kg
Number of Gels	1-4
Total Volume inner buffer chamber	640 mL
Total buffer Volume for 2 gels	5.3 L
Total buffer Volume for 4 gels	4.8 L
Std run time without Cooling	4-5 hours
Std run time with Cooling	3-4 hours

ORDERING INFORMATION

Catalog No.	Description
E2020-CU	ENDURO VE20 Dual Casting System
E2120-EC	ENDURO VE20 External Casting Stand
E2120-CAST	ENDURO VE20 Casting Base
E2120-PI	ENDURO VE20 Page insert
E2120-CC	ENDURO VE20 Detachable Cooling Coil
E2120-RM	ENDURO VE20 Replacement Rubber mats for 20 x 20 cm caster.
E2120-MCB	ENDURO VE20 Maxi Cooling Block
E2120-CC	ENDURO VE20 Detachable Cooling Coil
E2120-LD	VE20 lid (No cables)

ENDURO™ VE20 VERTICAL GEL SYSTEM

ACCESSORY COMBS

Catalog No.	Description	Comb Thickness	Multichannel Compatible
E2120-C-.75-1-1	Comb 1 Prep, 1 Marker,	0.75 mm	No
E2120-C-.75-5	Comb 5 sample,	0.75 mm	No
E2120-C-.75-10	Comb 10 sample	0.75 mm	No
E2120-C-.75-18MC	Comb 18 sample	0.75 mm	Yes
E2120-C-.75-24	Comb 24 sample	0.75 mm	No
E2120-C-.75-30	Comb 30 sample	0.75 mm	No
E2120-C-.75-36MC	Comb 36 sample	0.75 mm	Yes
E2120-C-.75-48	Comb 48 sample	0.75 mm	No
E2120-C-1-1-1	Comb 1 Prep, 1 Marker	1 mm	No
E2120-C-1-5	Comb 5 sample	1 mm	No
E2120-C-1-10	Comb 10 sample	1 mm	No
E2120-C-1-18MC	Comb 18 sample	1 mm	Yes
E2120-C-1-24	Comb 24 sample	1 mm	No
E2120-C-1-30	Comb 30 sample	1 mm	No
E2120-C-1-36MC	Comb 36 sample	1 mm	Yes
E2120-C-1-48	Comb 48 sample	1 mm	No
E2120-C-1.5-1-1	Comb 1 Prep, 1 Marker	1.5 mm	No
E2120-C-1.5-5	Comb 5 sample	1.5 mm	No
E2120-C-1.5-10	Comb 10 sample	1.5 mm	No
E2120-C-1.5-18MC	Comb 18 sample	1.5 mm	Yes
E2120-C-1.5-24	Comb 24 sample	1.5 mm	No
E2120-C-1.5-30	Comb 30 sample	1.5 mm	No
E2120-C-1.5-36MC	Comb 36 sample	1.5 mm	Yes
E2120-C-1.5-48	Comb 48 sample	1.5 mm	No
E2120-C-2-1-1	Comb 1 Prep, 1 Marker,	2 mm	No
E2120-C-2-5	Comb 5 sample,	2 mm	No
E2120-C-2-10	Comb 10 sample	2 mm	No
E2120-C-2-18MC	Comb 18 sample	2 mm	Yes
E2120-C-2-24	Comb 24 sample	2 mm	No
E2120-C-2-30	Comb 30 sample	2 mm	No
E2120-C-2-36MC	Comb 36 sample	2 mm	Yes
E2120-C-2-48	Comb 48 sample	2 mm	No



Component parts

1. Lid
2. Tank
3. Combs
4. Plain glass plates with bonded spacers
5. PAGE insert
6. Caster
7. Gel release tool
8. Freezer pack
9. Notched glass plates

ACCESSORY PLATES

Catalog No.	Description
E2120-NG-.75-BS	20 x 20 cm Notched Glass Plates with 0.75 mm Bonded Spacers (Pack of 2)
E2120-NG-1-BS	20 x 20 cm Notched Glass Plates with 1mm Bonded Spacers (Pack of 2)
E2120-NG-2	20 x 20 cm Notched Glass Plates 2 mm thick (Pack of 2)
E2120-PG-.75-BS	20 x 20 cm Plain Glass Plates with 0.75 mm Bonded Spacers (Pack of 2)
E2120-PG-1.5-BS	20 x 20 cm Plain Glass Plates with 1.5 mm Bonded Spacers (Pack of 2)
E2120-PG-1-BS	20 x 20 cm Plain Glass Plates with 1mm Bonded Spacers (Pack of 2)
E2120-PG-2	20 x 20 cm Plain Glass Plates 2 mm thick (Pack of 2)
E2120-PG-2-BS	20 x 20 cm Plain Glass Plates with 2 mm Bonded Spacers (Pack of 2)
E2120-DP	20 x 20 cm, Dummy Plate

ENDURO™ VE10 BLOTTER SYSTEM

This ENDURO VE10 blotter has a 4 mini gel (10 x 10 cm) capacity and can be purchased either as a stand-alone tank blotter or part of an integrated mini-gel/blotting system utilizing one shared tank (see page 6).

This electroblotting system includes tank, blotting inserts and 4 cassettes with fiber pads.



ORDERING INFORMATION

Catalog No.	Description
E2010-BT	ENDURO Electroblotting System, includes tank, blotting insert & 4 cassettes
E2010-BM	Mini Vertical Electroblotting Module for use with mini vertical gel system, includes 4 cassettes and 8 fiber pads
E2010-PM*	Mini Vertical PAGE module for use with mini vertical gel system.
E2110-B-MC	Blotting Cassette
E2110-B-FP	Fiber Blotting Pads, pack of 8 pads
E2110-CP	Mini Cooling Pack for use with mini vertical gel system

*Glass plates, combs & caster not included.

ENDURO™ VE20 BLOTTER SYSTEM

The ENDURO VE20 blotter has a large capacity. It can hold up to 16 mini-gels or 4 large format gels. It comes with tank, lid, platinum wire electrodes, 4 cassettes, 18 fiber pads and cooling coil. The VE20 electroblotting system provides all necessary components for performing transfers from vertical slab gels. It has interchangeable modular inserts that can combine with VE20 vertical PAGE to use the same universal tank and lid. Complete flexibility is provided as the VE20 can be run with most power settings required. It can perform overnight transfers at voltages as low as 35V and rapid, high-intensity transfers up to 200V in 1-2 hours. The VE20 comes standard with platinum wire electrodes 8 cm apart for increased capacity. A high intensity insert with plate electrodes 4 cm apart for rapid transfers is also available, E2020-HITB.

The detachable cooling coil, which connects to the laboratory water supply or a recirculating chiller, prevents buffer depletion to allow overnight transfers and fast high-intensity blots. It also maintains the low temperatures important for protein stability during native transfers. The open design and rigid cassettes maximize current transfer and eliminate 'shadow band' formation. Color-coded cassettes prevent polarity reversal ensuring proper blotting. This is a well thought out high capacity tank blotter and a great value



ORDERING INFORMATION

Catalog No.	Description
E2020-TB	ENDURO VE20 Blotting System, system Including tank and lid, 4 cassettes, 18 fibre pads, cooling coil
E2020-TBI	ENDURO VE20 Maxi Platinum Wire Blotting Inset, 4x compression cassettes and 18x fibre pads
E2120-TBC	ENDURO VE20 Blot Maxi Cassette
E2120-TBFP	Fibre pads - Pack of 6
E2020-HITB	ENDURO VE20 HS Blotting System, High Intensity System including tank and lid, 1 cassettes, 6 fiber pads, cooling coil
E2120-HITBI	ENDURO VE20 HS Blotting System High intensity insert - includes 1 cassette and 6 fibre pads
E2120-CC	ENDURO VE20 Detachable Cooling Coil
E2120-LD	VE20 lid (No cables)
E2120-T	VE20 Tank

ENDURO™ SEMI-DRY BLOTTER

The ENDURO Semi Dry Blotter offers rapid transfer times for DNA, RNA and protein blotting – typically 15 to 30 minutes. Western, Northern and Southern Blots can be easily accomplished via uncomplicated buffer and set up procedures. The Semi Dry Blotter is compatible with gel thicknesses from 0.25 mm up to 10 mm without the need for additional equipment.

The Semi Dry Blotting has the added benefit of economic transfers due to very low buffer volumes – typically only a few milliliters of buffer is required per transfer. The Semi-Dry Blotter utilizes a screw down lid, which secures the blot sandwich and allows complete control of pressure ensuring even transfer. The electrodes, comprising platinum coated anode and stainless steel cathode, will exhibit practically no corrosion therefore providing many years of trouble free use. Uniform heat dispersion across the blot sandwich ensures stable transfer times and no heat induced sample loss or transfer distortions. Electrode plates are fully separated to prevent arcing or damage.



E02020-SDBPS

SPECIFICATIONS

Dimensions (L x W x H)	32.5 x 25 x 5.5 cm 12.8 x 9.8 x 2.2 in
Recommended Current	.8mA / cm ²
Active Transfer Area	20 x 20 cm
Weight	1.4 kg
Buffer Volume	20 mL
Sample Capacity	
4 Blots:	8 x 8.5 cm
2 Blots:	16 x 8.5 cm
1 Blot:	16 x 17.5 cm
Run time	15 - 30 min

- Contemporary design
- Screwed lid provides correct pressure no matter what type of gel is being blotted
- Does not require proprietary chemistry to use

ORDERING INFORMATION

Catalog No.	Description
E02020-SDB	ENDURO Semi Dry Blotter for Western, Southern and Northern Blots
E02020-SDBPS*	ENDURO Semi Dry Blotter/ 250V Power Supply Kit -115V
E0203*	ENDURO Model 250V Power Supply 250V, 3A, 300W programmable with timer
R1000-10BP	ENDURO MW Marker, 10bp ladder (100 - 2,000 bp), 0.1µg/µl, 500 µl vial
R1000-1KB	ENDURO MW Marker, 1 kb ladder (300 - 10,000 bp), 0.1µg/µl, 500 µl via

*To order 230V add -230V to end of catalog number.

ENDURO™ POWER SUPPLIES SELECTION GUIDE

	Gel Size (W x L x H)	# of Gels	Start Run				End Run				Run Time	Power Supply	
			Voltage	CST	Current	CST	Voltage	CST	Current	CST			
SDS-PAGE, SECOND-DIMENSION 2D													
VE10	80 x 85 x 1 mm	2-4	200v	✓	120- 240mA			200v	✓	120mA		40-60 min	E0303, E0304, E0500, E0203
VE20	160 x 175 x 1 mm	2-4	100v		35mA	✓		350v		35mA	✓	5 hr. max.	E0500
DNA RESTRICTION ANALYSIS													
E1007-7	70 x 70 x 5 mm	1	80v	✓	40mA			80v	✓	45mA		45 - 60 min	E0303, E0304, E0500, E0203
E1007-10	71 x 70 x 5 mm	1	80v	✓	40mA			80v	✓	45mA		45 - 60 min	E0303, E0304, E0500, E0203
E1010-10	100 x 100 x 5 mm	1	90v	✓	50mA			95v	✓	55mA		45 - 60 min	E0303, E0304, E0500, E0203
E1015-10	100 x 150 x 5 mm	1	90v	✓	50mA			95v	✓	55mA		45 - 60 min	E0303, E0304, E0500, E0203
E1015-15	150 x 150 x 5 mm	1	90-150v	✓	50 - 80mA			90-150v	✓	55 - 90mA		60 - 90 min	E0303, E0304, E0500, E0203
E1020-20	200 x 200 x 5 mm	1	100- 150v	✓	50 - 80mA			100- 150v	✓	55 - 90mA		60 - 90 min	E0303, E0304, E0500, E0203
HIGH THROUGHPUT DNA ELECTROPHORESIS (HORIZONTAL)													
E1010-9611	100 x 120 x 5 mm		70v	✓	40			80v	✓	45mA		30-45 min	E0303, E0304, E0500, E0203
WESTERN BLOTTING													
E2010-BT	80 x 85 x 1 mm	4	100v		250mA			100v	✓	400mA		2 hr.	E0303, E0304, E0500, E0203
E2020-TB	160 x 175 x 1 mm	4	50 / 100v	✓	150 - 250 /1000mA	✓		50 / 100v	✓	150 - 250 /1000mA	✓	5-20hr / 1-5hr	E0203
			Wire/Plate Electrode		1600 Wire/Plate Electrode			Wire/Plate Electrode		1600 Wire/Plate Electrode			
E2020-SDB (semi-dry)	200 x 200 x 2/5 mm	1 lg 4 sm	75v	✓	1200mA			75v	✓	1200mA		15 - 30 min	E0203

*CST=Constant

ENDURO™ POWER SUPPLY 250V & 300V



The ENDURO™ Power Supplies are ideal for DNA, RNA and protein electrophoresis as well as blotting. They provide a high degree of sophistication and versatility yet are extremely easy to use. Three models are available to meet a variety of needs. They all provide dependable performance with simple programming and are certified to IEC-61010-1 the international safety standard. This ensures the highest level of safety and protection.

The ENDURO™ 300V Power Supply is ideal for general laboratory use especially for horizontal gel electrophoresis and mini-vertical PAGE gels. This high value power supply provides operating choices that include constant voltage or constant amperage with automatic crossover, no load detection, sudden load change and over voltage protection. It comes with a timer and

allows for timed or continuous operation. All operating parameters are set using the membrane keypad and displayed digitally on the backlit LCD. Safety features are incorporated into the power supply systems. The units can also be programmed to restart in the event of a power disruption. This comes with to run up to 4 gel tanks simultaneously.

The ENDURO™ 250V is a high current programmable power supply ideal for all blotting applications, horizontal gel electrophoresis and many vertical protein applications where programming is necessary. It features a voltage range from 5 to 250V in 1V increments. Current is adjustable in 0.01A steps to a maximum of 3A. Wattage is adjustable in 1W steps up to 300W. This comes with outputs for up to 4 sets of leads.

ORDERING INFORMATION

Catalog No.	Description
E0203	ENDURO 250 volt Power Supply
E0303	ENDURO 300 volt Power Supply

*To order 230V add -230V to end of catalog number.

SPECIFICATIONS

	Model 300V	Model 250V
Output voltage range / increments	2-300V / 1V	5-250V / 1V
Output current range / increments	4-500 mA / 1 mA	10-3000 mA / 10 mA
Output power range / increments	90 watts max. / na	1-300 W / 1V
Operating constant modes	Voltage or current	Voltage, current, or power
Timer	1-999 minutes or continuous	1-99h 59 minutes or continuous
Programmable	No	10 steps/program / 20 program memory
Dimensions (W x D x H)	19 x 25 x 8 cm	19 x 25 x 8 cm
Weight	2.5 kg	2.5 kg
Input Voltage	120-230V	120-230V

ENDURO™ POWER SUPPLY 500V

The ENDURO 500V Power Supply is a fully programmable power supply ideal for all Protein and DNA gel running applications. It is a 500V, 800mA, 300W power supply with a timer and ability to program up to 6 steps per method. Ideal for applications requiring easing of samples into gels before speeding up runs.

SPECIFICATIONS

Output voltage range / increments	5~500V/1V	Programmable	6 steps / 30 programmed files
Output current range / increments	1~800mA/1mA	Dimensions	190 x 305 x 95mm(W x L x H)
Output power range / increments	300W/1W	Weight	Approx. 2.5kg
Operating Constant modes	Voltage or current or power	Input Voltage	100V ~240V
Timer	Constant mode:1~9999 mins with alarm, continuous		

ORDERING INFORMATION

Catalog No.	Description
E0500	ENDURO 500V Power Supply (power supply not depicted here)

*To order 230V add -230V to end of catalog number.

ENDURO™ POWER SUPPLY MINI



The ENDURO™ Mini is a great saver of space and money. This power supply can handle up to 2 gel boxes at a time and is great for Horizontal DNA gels and Mini-Vertical Protein gels. These are small in size but not performance. They are stackable but when combined with the PowerStack rack they can be efficiently stacked allowing optimal air circulation while only utilizing one power outlet at the lab bench. These units are full featured with 300V , 400mA , 60W and a timer built-in. They can run at either constant voltage or constant current and have automatic cross-over as well as no-load detection.



Power Supply Mini and VE10

ORDERING INFORMATION

Catalog No.	Description
E0304	ENDURO Mini 300V
E0304-R	ENDURO PowerStack

*To order 230V add -230V to end of catalog number.

SPECIFICATIONS

Output voltage range / increments	10 - 300V / 1V
Output current range / increments	10 - 400mA / 1mA
Output power	60W
Operating constant modes	Constant voltage or constant current
Timer	1~999 minutes with alarm, continuous
Programmable	No
Dimensions (W xD x H)	140 x 191 x 84mm
Weight	1 kg
Input Voltage	100 - 240V



E0304

ENDURO™ POWER SUPPLY ADAPTERS

PART NUMBER

E1007-AD

E1007-AD2



Description	Extends the length of the standard electrode cables (4 mm) of Labnet's electrophoresis equipment to fit within deeply recessed power supplies	Allows Labnet's electrophoresis equipment to be run from high voltage power supplies with 2 mm outputs.
Compatibility	4 mm to 4 mm	4 mm to 2 mm

ENDURO™ UV TRANSILLUMINATORS

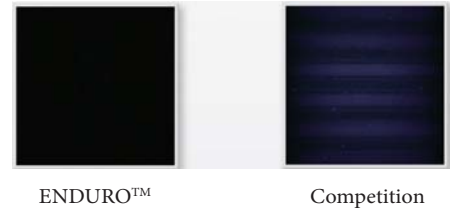
The ENDURO™ UV Transilluminator represent a great new imaging product true to the ENDURO™ name. These UV transilluminators have been designed for rugged use and durability with exceptional performance. The unique hinge design and frame on the UV shield prevents the lid from cracking and hinge damage predominant on most transilluminators in the market. The compact size and quality of image offer a great value. These UV transilluminators come in single or dual wavelength models.



- Compact Size with 21 x 26 cm viewing area
- Unique heavy duty hinge design can be held in place at any angle for gel cutting
- UV shield allows No leakage to user
- Uniform UV Black Glass provides better imaging contrast
(See above image)

SPECIFICATIONS

Model	U1001	U1002
Outer Dimensions	253 x 340 x 80 mm	253 x 340 x 80 mm
Viewing Dimension	210 x 260 mm	210 x 2260 mm
Wavelength	302 nm	302 nm / 365 nm
UV tubes - 302 nm	8W x 6	8W x 6
UV tubes - 365 nm		8W x 6
Power	100V-240V, 50/60 Hz	100V-240V, 50/60 Hz
Weight	5 kg	5 kg



ORDERING INFORMATION

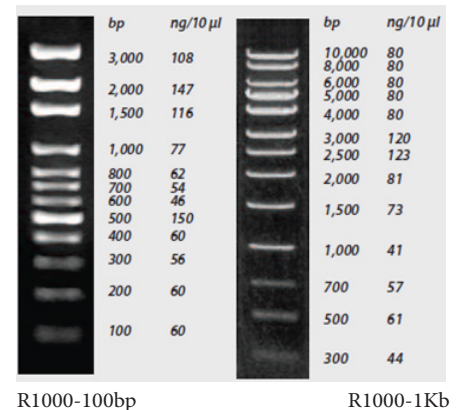
Catalog No.	Description
U1001	ENDURO UV Transilluminator with 302 nm wavelength, 115V with US plug
U1001-230V	ENDURO UV Transilluminator with 302 nm wavelength, 230V with UK & EU plugs
U1002	ENDURO UV Transilluminator with 302 nm and 365 nm wavelengths, 115V with US plug.
U1002-230V	ENDURO UV Transilluminator with 302 nm and 365 nm wavelengths, 230V with UK & EU plugs

ENDURO™ MW MARKERS

The 100 bp and 1 Kb DNA markers are designed to allow the sizing of a wide range of crisp and precise DNA fragments ranging from 100 bp to 10000 bp. These markers are stable at ambient temperature with 2 years shelf life. They are ready-to-use, formulated with loading buffer and Bromophenol blue for easy loading and tracking on the gel.

The 100 bp DNA ladder contains 11 discrete DNA fragments ranging in size from 100 bp to 3,000 bp, this marker is ideal for the size determination of PCR products.

The 1 Kb DNA ladder contains 13 discrete DNA fragments ranging in size from 300 bp to 10,000 bp. This marker is ideal for the size determination of digested DNA



ORDERING INFORMATION

Catalog No.	Description
R1000-100bp	ENDURO Molecular Marker 100bp DNA ladder: 11 fragments, 100-2,000bp, 500 µL
R1000-1Kb	ENDURO Molecular Marker 1 Kb DNA ladder: 13 fragments, 300-10,000bp, 500 µL

ENDURO™ GDS GEL DOCUMENTATION SYSTEM



The ENDURO™ GDS Gel Documentation System is a state-of-the-art imaging system providing an incredible combination of performance, value and ease of use. It is a perfect fit with the rapidly expanding ENDURO™ Electrophoresis and Labnet Molecular Biology product line.

The ENDURO GDS provides exceptional resolution with a 5MP scientific camera, a built in UV transilluminator with a safety shut off switch, and viewing port are unique in this price range. The large field of view (20 cm x 24 cm) allows for large gel imaging, or the imaging of many gels at once. The system was designed to always be in focus, which means no manual manipulation of the lens is required, ever.

Application flexibility is achieved through the UV transilluminators, the optional white light conversion screen, and optional blue conversion screen. The standard filter on the ENDURO GDS is compatible

with Ethidium bromide, SYBR® Safe, gel red and SYBR Green to name a few. The optional Clear Gel Tray provides a great tool to make gel handling easier. The tapered end allows safe transfer of gel reducing risk of damaging gel in transport. The GDS is ready to use right out of the box. Just connect a PC and run.

The ENDURO GDS was designed to save images as either jpg. files for publications or tiff. files for quantitative analysis. Labnet offers Total Lab 1D software in either single, multiple user or network licenses. Total Lab 1D provides for the rapid analysis of images and can get you results in a single click of the mouse. The user has the ability to review each stage of the workflow analysis and intervene or edit if required. Combining high levels of automation with final user review allows rapid and accurate quantitative analysis. The user then has full control of the visualization tools and data display - outputting only those data fields that are of importance as well as the images of choice. Reports can easily be generated including quantitative data, gel image and band profile. This is a full featured analytical software package that is the result of decades of software refinement.

ORDERING INFORMATION

Catalog No.	Description
GDS-1302	ENDURO GDS Imaging System, 302 nm - Universal Voltage
GDS-1365	ENDURO GDS Imaging System, 365 nm - Universal Voltage

SPECIFICATIONS

Camera	5 Megapixels (2592 x 1944), scientific grade sensor
Lens	8 mm, f1.4 hands-free lens with Smart Capture technology
Cabinet	<ul style="list-style-type: none"> Built in UV transilluminator (302 nm or 365 nm) with: UV viewing port Software controls of UV light with automatic shut-off switch UV safety override switch in door Maximum field of view 20 x 24 cm
Software	Application-driven imaging offers streamlined workflow Optional: TotalLab 1D for quantitative analysis*
Dimensions	34.6 x 31.1 x 68.6 cm (13.6' x 12.2' x 27')
Weight	21.4 kg (48 lbs)

* Recommended that Microsoft Excel is loaded on the PC to use optional TotalLab 1D software



GDS Viewing Window

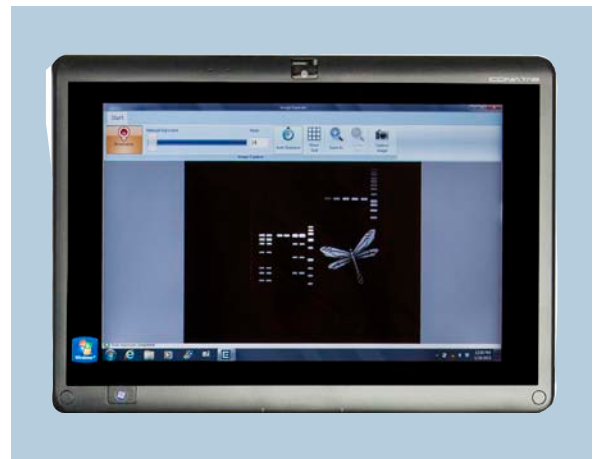
PC SPECIFICATIONS

Operating system	Windows XP (with Microsoft .NET Framework 3.5) Windows Vista 32 or 64 bit Windows 7 32 or 64 bit
Minimum hardware requirements	1.4 GHz processor speed 2GB RAM 16 GB Free Hard Disk Space 2 USB (camera and printer)

ENDURO™ GDS TOUCH GEL DOCUMENTATION SYSTEM



The ENDURO GDS Touch is an integrated system for DNA analysis and gel documentation. It is based on the GDS but incorporates an integrated tablet PC with a three position filter wheel with both EPI-Blue and EPI-White light sources standard. The market has shown a growing demand for being able to image DNA at higher wavelengths so as to prevent DNA nicking for downstream applications. The powerful EPI-Blue light can discriminate bands stained with SYBR SAFE up to 3 levels of magnitude greater than imagers using blue light conversion screens. Just like the ENDURO GDS, there is no need to touch the camera. Installation and operation is simple and acquisition of image can be achieved in 4 touches of the tablet. The Enduro GDS Touch is ideal for life science research labs who need a flexible system with a small footprint.



SPECIFICATIONS

Camera Resolution	5MP
Lens	Manual F 1.4 Lens (No Focus Required)
Field of View	20cm x 24cm
Standard Illumination	Epi blue and white light, 302 or 365nm UV transillumination
Pull out UV	For visualizing and cutting bands
System Controls	Integrated Touchscreen computer
Filter	Three position (EtBr included)

Image Capture Software

Annotation and email features	Yes
5 minute auto shut-off of UV	Yes
UV on/off in software	Yes
White light on/off in software	Yes
Blue light on/off in software	Yes
Desktop compatible	No
Touchscreen/tablet compatible	Yes
Communications	USB . Tablet has wireless and bluetooth options
Footprint	14" by 12.5" x 25"

ORDERING INFORMATION

Catalog No.	Description
GDST-1302	ENDURO GDS Touch Imaging System, 302 nm - Universal Voltage
GDST-1365	ENDURO GDS Touch Imaging System, 365 nm - Universal Voltage



ENDURO™ GEL DOCUMENTATION SYSTEM ACCESSORIES



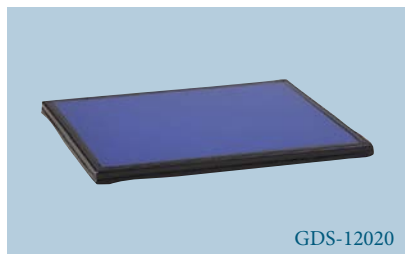
GDS-12018

GDS-12018 Clear Gel Tray
-Use for gel transfer and cutting



GDS-12019

GDS-12019 White Light Conversion Tray
-Use for Coomassie and Silver stain



GDS-12020

GDS-12020 Blue Light Conversion Screen (for GDS only)
-Use for Gel Green, SYBR® safe stain, and stains that excite at 490 nm



GDS-12021

GDS-12021 Thermal Printer
GDS-12022 Thermal Paper



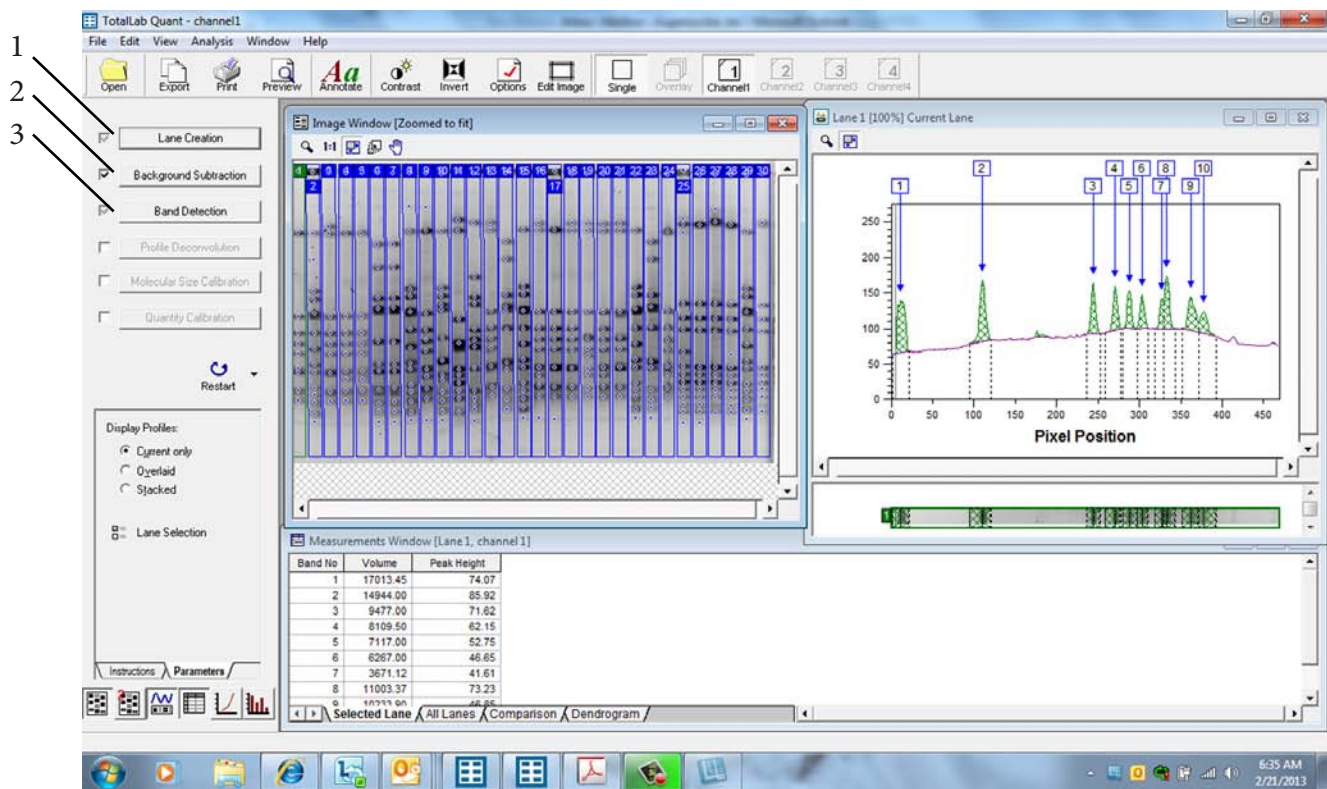
OPTIONAL FILTERS (For GDS Touch only)

GDST-676R	Red filter (676 nm)
GDST-572G	Green Filter (572 nm)
GDST-497B	Blue Filter (497 nm)

STAIN GUIDE

Fluor/Stain	Description	Part Number
Ethidium Bromide	302nm UV	Standard
Gel Red	302nm UV	Standard
SYBR Green	302nm and 488nm	Standard
Gel Green	Blue Light Conversion Screen	GDS-12020
SYBR Safe	Blue Light Conversion Screen	GDS-12020
Coomassie Stain	White Light Conversion Screen	GDS-12019
Silver Stain	White Light Conversion Screen	GDS-12019

Labnet offers TotalLab 1D software in either single, multiple user or network licenses. TotalLab 1D provides for the rapid analysis of images and can get you results in a single click of the mouse. The user has the ability to review each stage of the workflow analysis and intervene or edit if required. Combining high levels of automation with final user review allows rapid and accurate quantitative analysis. The user then has full control of the visualization tools and data display - outputting only those data fields that are of importance as well as the images of choice. Reports can easily be generated including quantitative data, gel image and band profile. This is a full featured analytical software package that is the result of decades of software refinement.

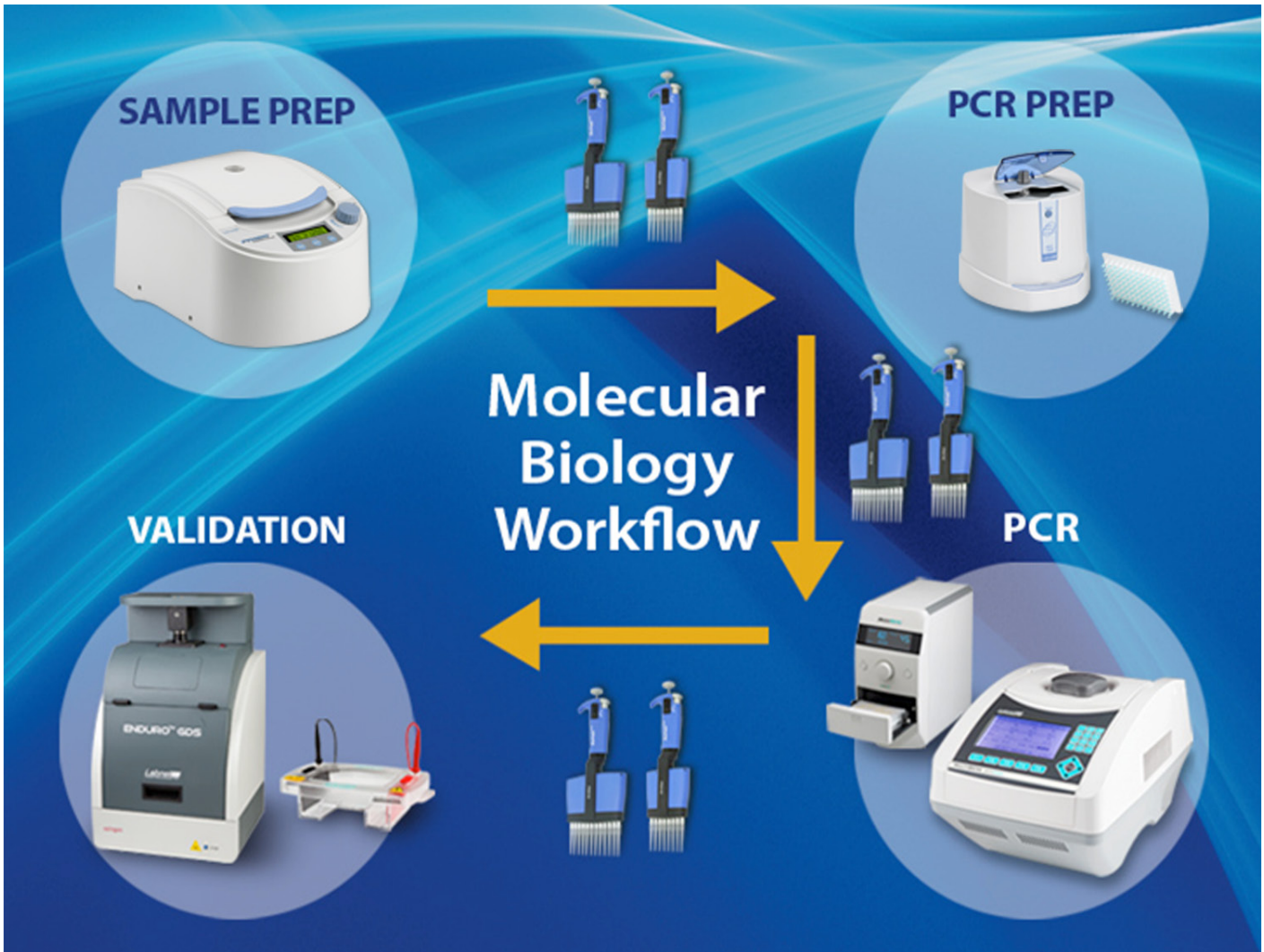


By pressing “Automatic” the first three actions in the experimental overview have been completed

- 1) Lane Creation
- 2) Background subtraction
- 3) Band detection

ORDERING INFORMATION

GDS - TLID-1	TotalLab 1D 1 user license
GDS - TLID-2	TotalLab 1D 2 user license
GDS - TLID-3	TotalLab 1D 3 user license
GDS - TLID-1U	TotalLab Quant upgrade 1 user license
GDS - TLID-3U	TotalLab Quant upgrade 3 user license



Molecular Biology Workflow

Sample Prep: Prism High Speed Microcentrifuge, C2500

PCR Prep: MPS1000 Plate Spinner, C1000

PCR: Optimax Thermal Cycler, TC9610 & Plate Sealer, PS1000

Validation: GDS Gel Document System, GDS-1302 & Horizontal Gel Box, E1010-10

In between steps: BioPette Plus Autoclavable Pipettes

Labnet has a complete offering of general laboratory equipment for the Molecular Biology Workflow that includes microtube and Plate Spinner centrifuges for PCR sample preparation, liquid handling for transfer of valuable samples, thermal cycler and plate sealer for running PCR and electrophoresis and gel documentation systems for validating the results. Each of these components were designed for optimal performance and ease of use. For additional information please visit our website or call Labnet customer service.





31 Mayfield Avenue Edison, NJ 08837 USA

Phone: +1 732 417 0700 • email: labnetinfo@corning.com

web: labnetinternational.com

